








MULTIFUNCTION ENTERTAINMENT CENTER

SOUTHERN ENTERPRISES INC.

STYLE No. BE064400TX

NOTE... This product has been engineered for easy assembly and constructed for durability. Now please take time to read through and follow assembly instructions.

HARDWARE LIST

- (1)  POST END CAP 8 PCS
- (2)  TH'D STUD 4 PCS
- (3)  SMALL ALLEN BOLT 16 PCS
- (4)  LONG ALLEN BOLT 32 PCS
- (5)  ALLEN WRENCH 1 PC

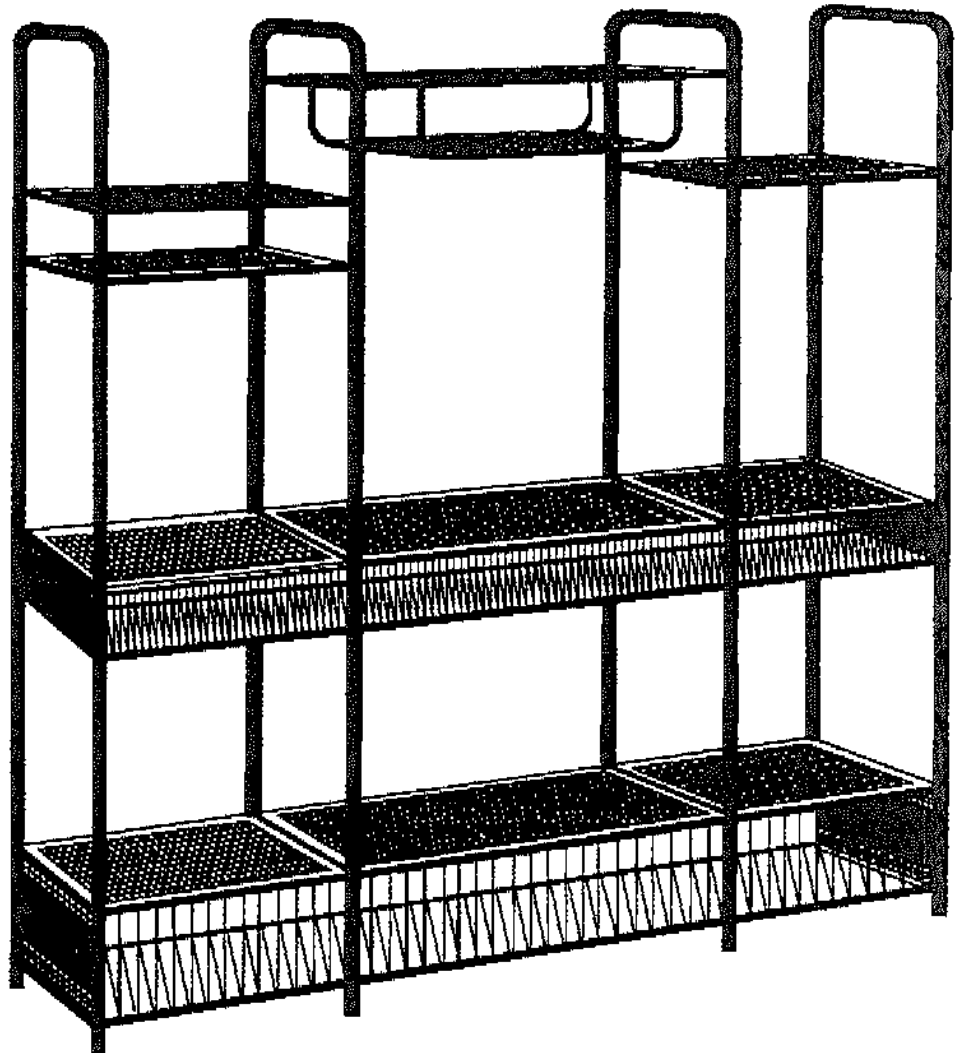
PARTS LIST

FRAME COMPONENTS

- (A) LH UPPER CIRCULAR FRAME
(4 HOLES & BOT CROSSBAR) 1 PC
- (B) LH UPPER MIDDLE CIRCULAR FRAME
(6 HOLES) 1 PC
- (C) RH UPPER MIDDLE CIRCULAR FRAME
(6 HOLES) 1 PC
- (D) RH UPPER CIRCULAR FRAME
(2 HOLES & BOT CROSSBAR) 1 PC
- (E) END BOTTOM FRAME
(2 HOLES FRT SIDE & 1 BACK SIDE
& 3 CROSSBARS) 2 PCS
- (F) FRT BOTTOM FRAME SUPPORT
(3 HOLES) 2 PCS
- (G) RR BOTTOM FRAME SUPPORT
(1 HOLE) 2 PCS
- (H) UPPER MIDDLE CROSSBAR
(2 HOLES) 2 PCS
- (J) MIDDLE & LOWER CROSSBAR
(2 TH'D HOLES AT ENDS) 2 PCS
- (K) "U" SHAPE HANGER BAR
(2 TH'D HOLES AT ENDS) 2 PCS
- (L) LH & RH CROSSBARS
(6 BETWEEN LH FRAMES &
4 BETWEEN RH FRAMES)
(2 TH'D HOLES AT ENDS)
10 PCS

GRILL & SHELF COMPONENTS

- (M) MIDDLE LOWER GRILL
(2 EA TAPPER ENDS) 1 PC
- (N) LH LOWER GRILL
(LEFT SIDE 2 TH'D HOLES &
RIGHT SIDE 2 SCREW HOLES) 1 PC
- (O) RH LOWER GRILL
(RIGHT SIDE 2 TH'D HOLES &
LEFT SIDE 2 SCREW HOLES) 1 PC
- (P) RR MIDDLE LOWER GRILL
(1 EA TAPPER ENDS) 1 PC
- (Q) LH RR LOWER GRILL
(LEFT SIDE TH'D HOLE &
RIGHT SIDE SCREW HOLE) 1 PC
- (R) RH RR LOWER GRILL
(RIGHT SIDE TH'D HOLE &
LEFT SIDE SCREW HOLE) 1 PC
- (S) MIDDLE UPPER GRILL
(2 EA TAPPER ENDS) 1 PC
- (T) LH MIDDLE UPPER GRILL
(LEFT SIDE 2 TH'D HOLES &
RIGHT SIDE 2 SCREW HOLES) 1 PC
- (U) RH MIDDLE UPPER GRILL
(RIGHT SIDE 2 TH'D HOLES &
LEFT SIDE 2 SCREW HOLES) 1 PC
- (V) RR MIDDLE UPPER GRILL
(1 EA TAPPER ENDS) 1 PC
- (W) LH RR UPPER GRILL
(LEFT SIDE TH'D HOLE &
RIGHT SIDE SCREW HOLE) 1 PC
- (X) RH RR UPPER GRILL
(RIGHT SIDE TH'D HOLE &
LEFT SIDE SCREW HOLE) 1 PC
- (Y) LH & RH UPPER OUTSIDE PLATE
(SCREW HOLE IN PLATE) 2 PCS
- (Z) LH & RH LOWER OUTSIDE PLATE
(SCREW HOLE IN PLATE) 2 PCS
- (AA) SNAP-ON SQ PERFORATED SHELVES
8 PCS
- (BB) SNAP-ON RECT PERFORATED
SHELVES 3 PCS





SOUTHERN ENTERPRISES INC.

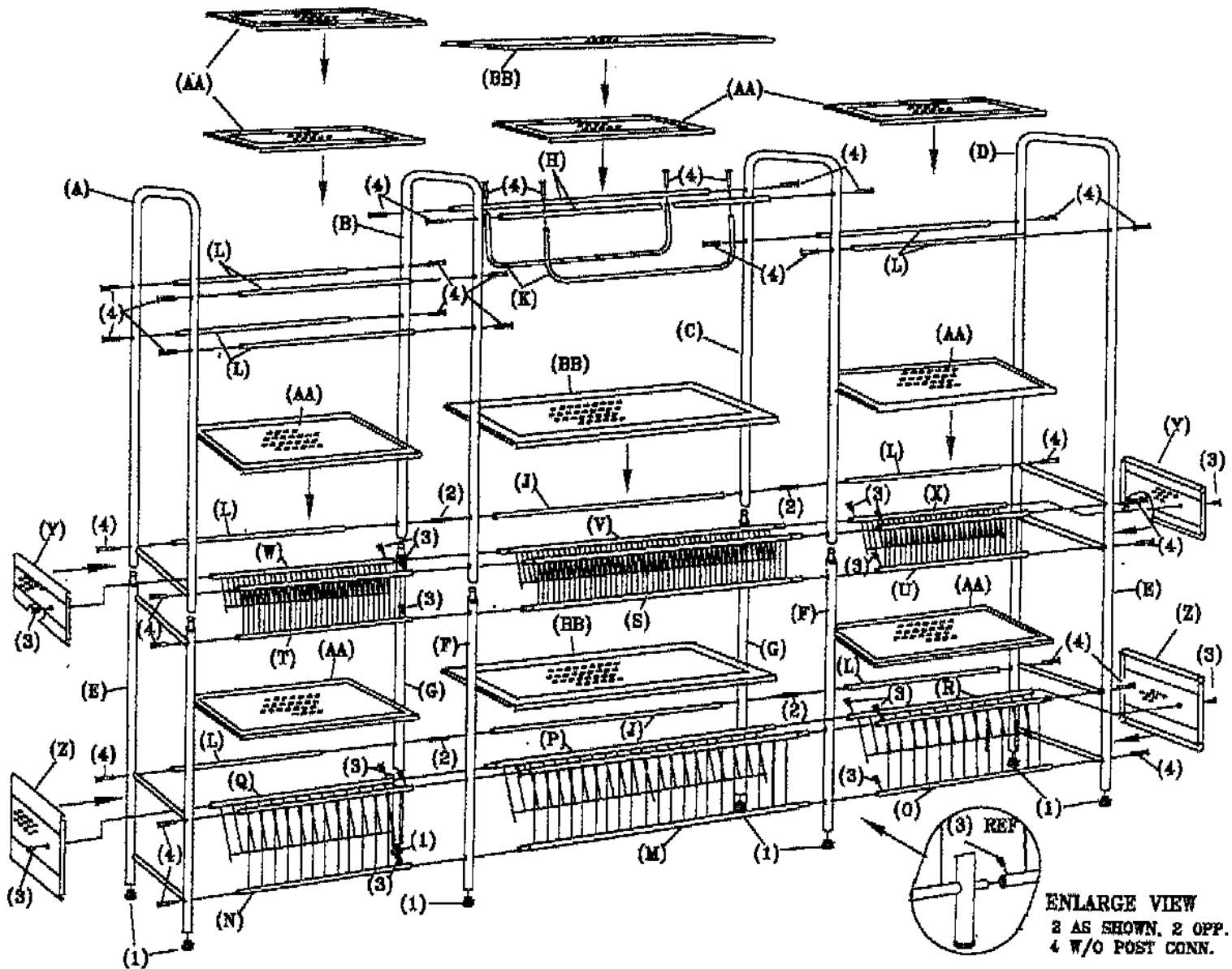
NR

ASSEMBLY and INSTRUCTIONS:

PLEASE READ INSTRUCTIONS COMPLETELY BEFORE BEGINNING ASSEMBLY

Select smooth, soft surface for assembly to avoid scratching finish.

ENTERTAINMENT CENTER



INSTRUCTIONS:

Unwrap and assort all components in respective piles, i.e. crossbars identified in one pile, grills in another and also shelves.

- STEP 1:** First, take LH Upper Circular Frame (A) and connect together with End Bottom Frame (E). Do likewise with Middle Upper Circular Frame (B) with RR Frame (F) and RR Frame Support ((G).
- STEP 2:** Now fasten together the two frames with necessary crossbars. At top there are four LH Crossbars (L) and attach with eight Long Bolts (4) and tighten with Allen Wrench (5).
- STEP 3:** Lift up section and insert four Post Caps (1) into bottom of posts.

